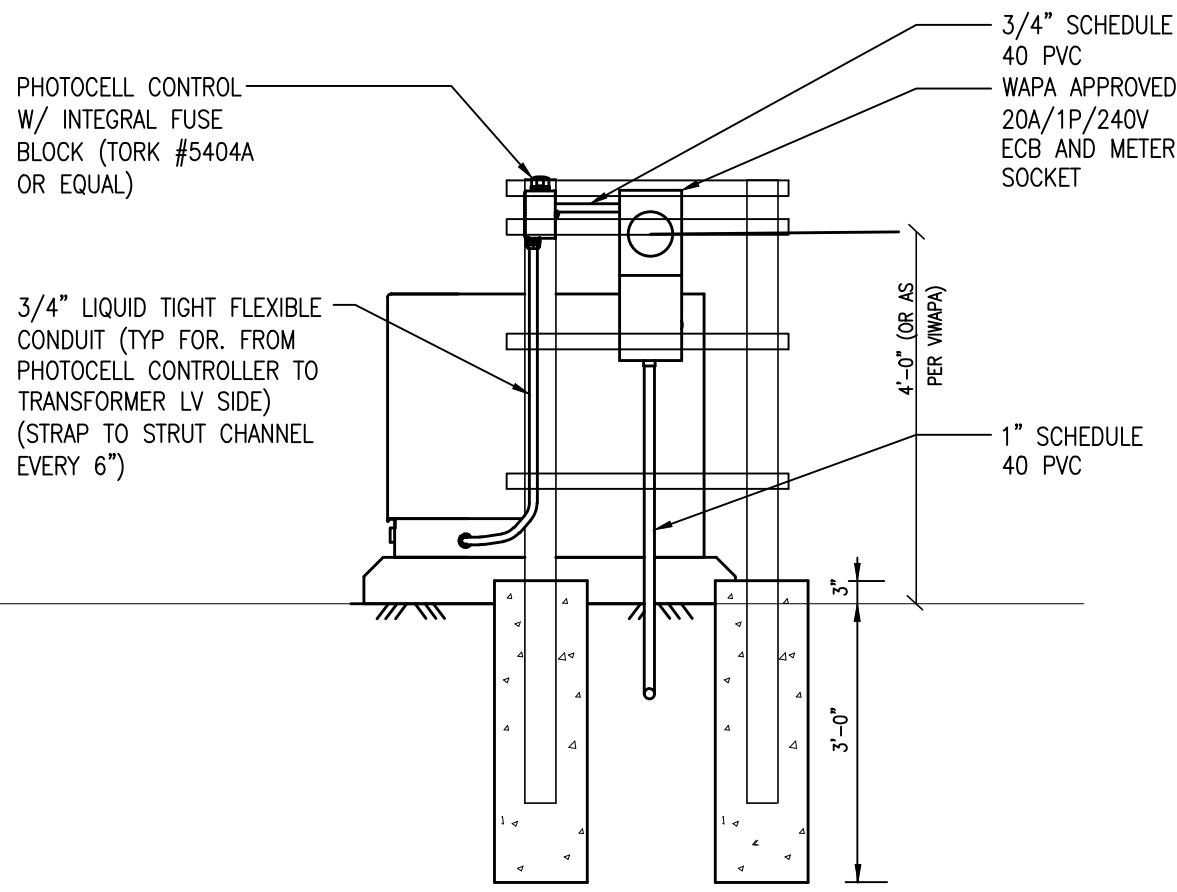
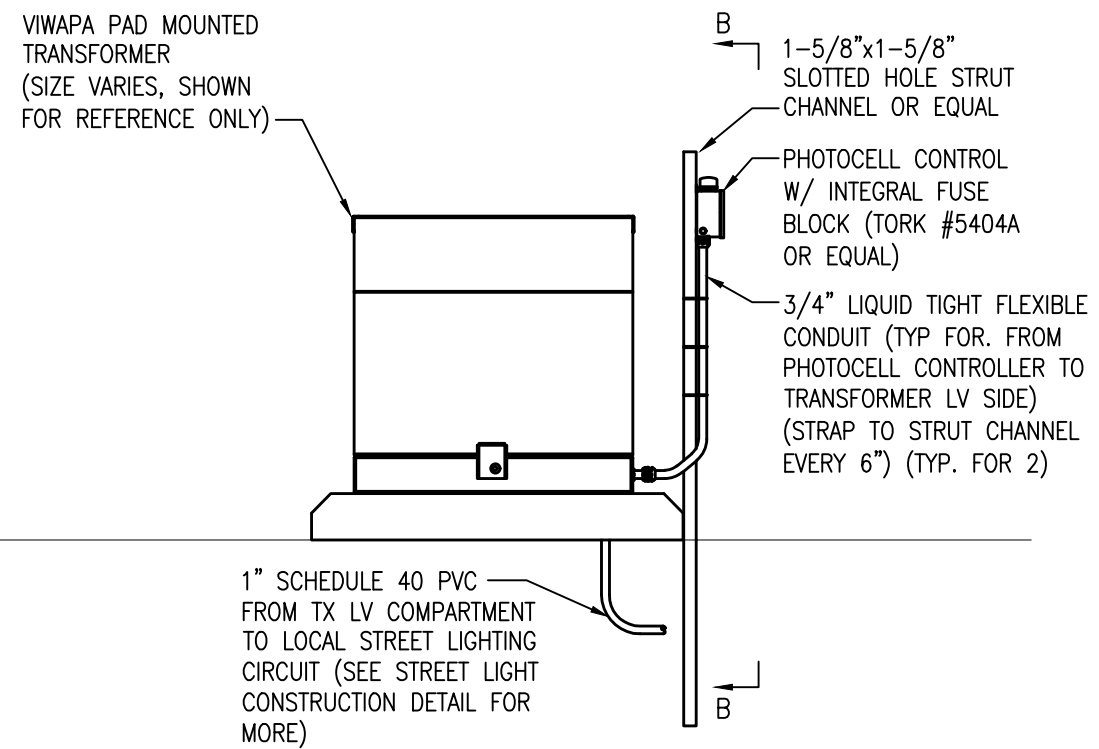


**PHOTOCELL CONTROLLER W/ WAPA METER  
@ PAD MOUNTED TRANSFORMER  
INSTALLATION DETAIL  
SCALE: 1/2" = 1'-0"**

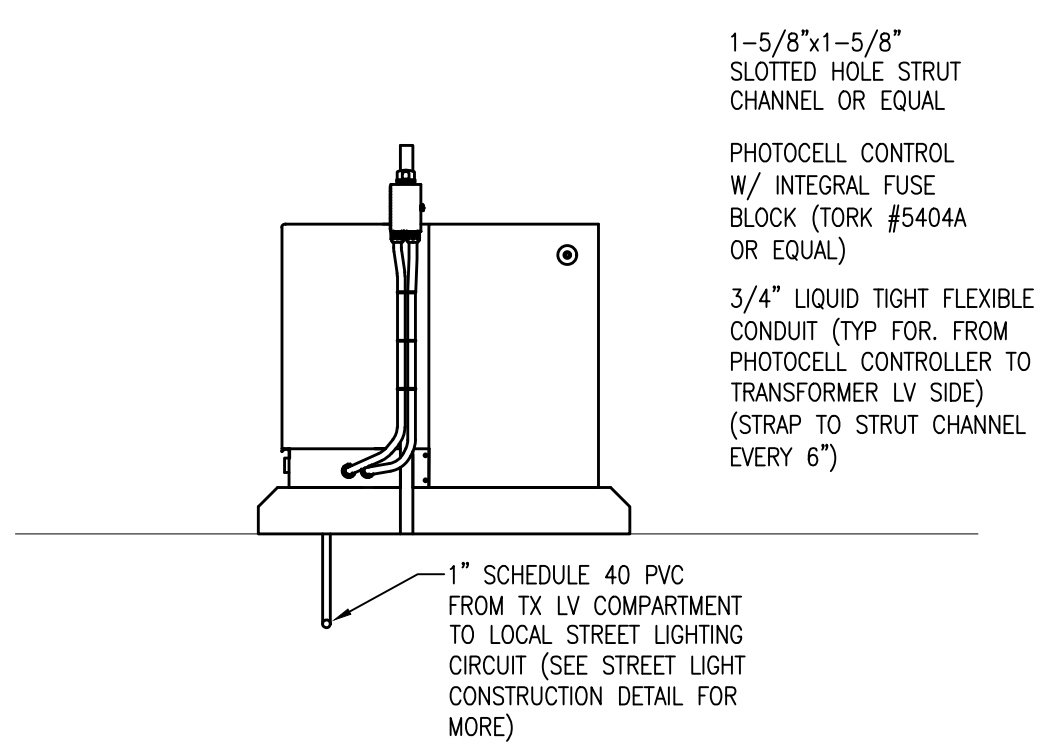


**PHOTOCELL CONTROLLER W/ WAPA METER  
@ PAD MOUNTED TRANSFORMER  
INSTALLATION DETAIL  
(SECTION 'A-A')  
SCALE: 1/2" = 1'-0"**

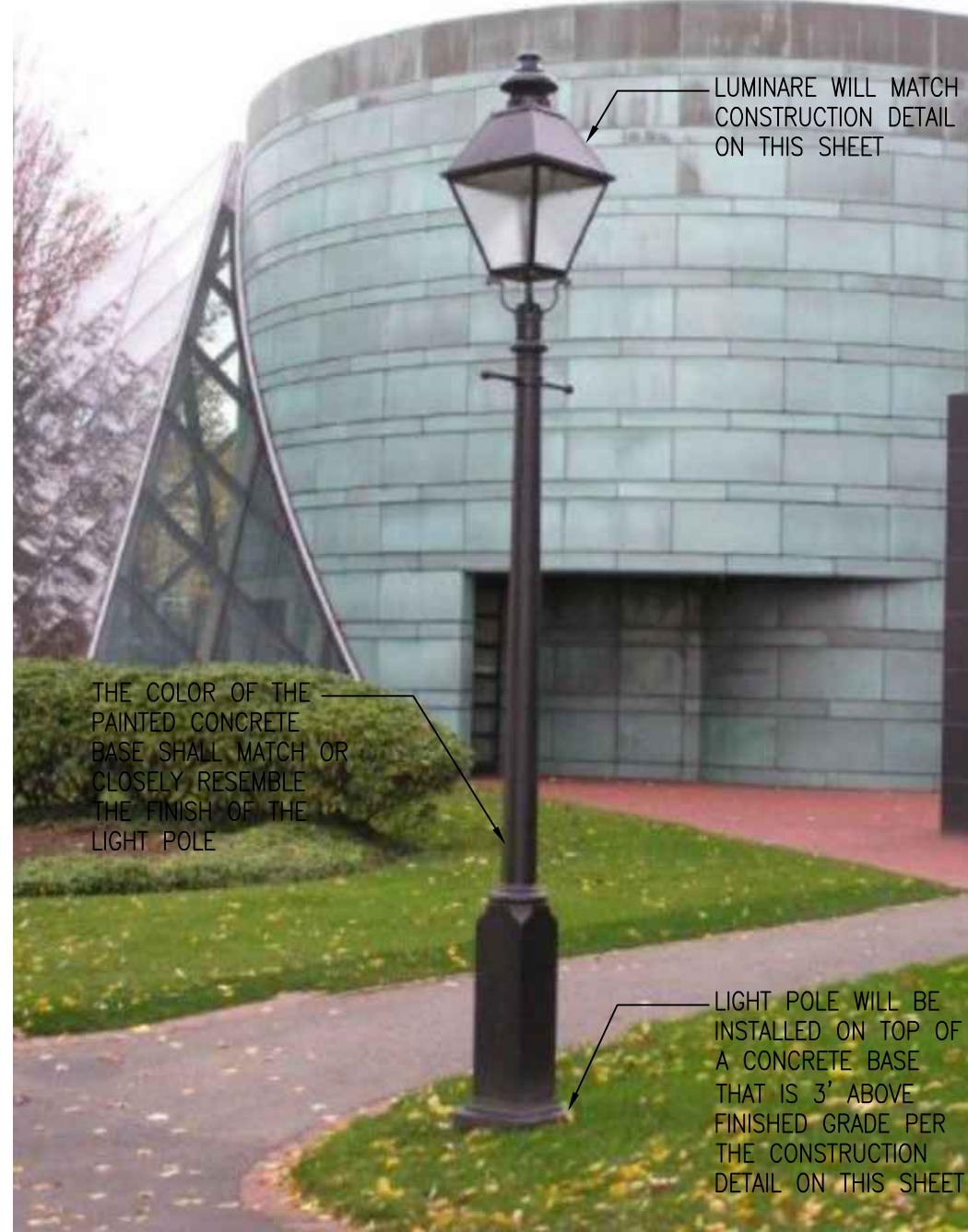
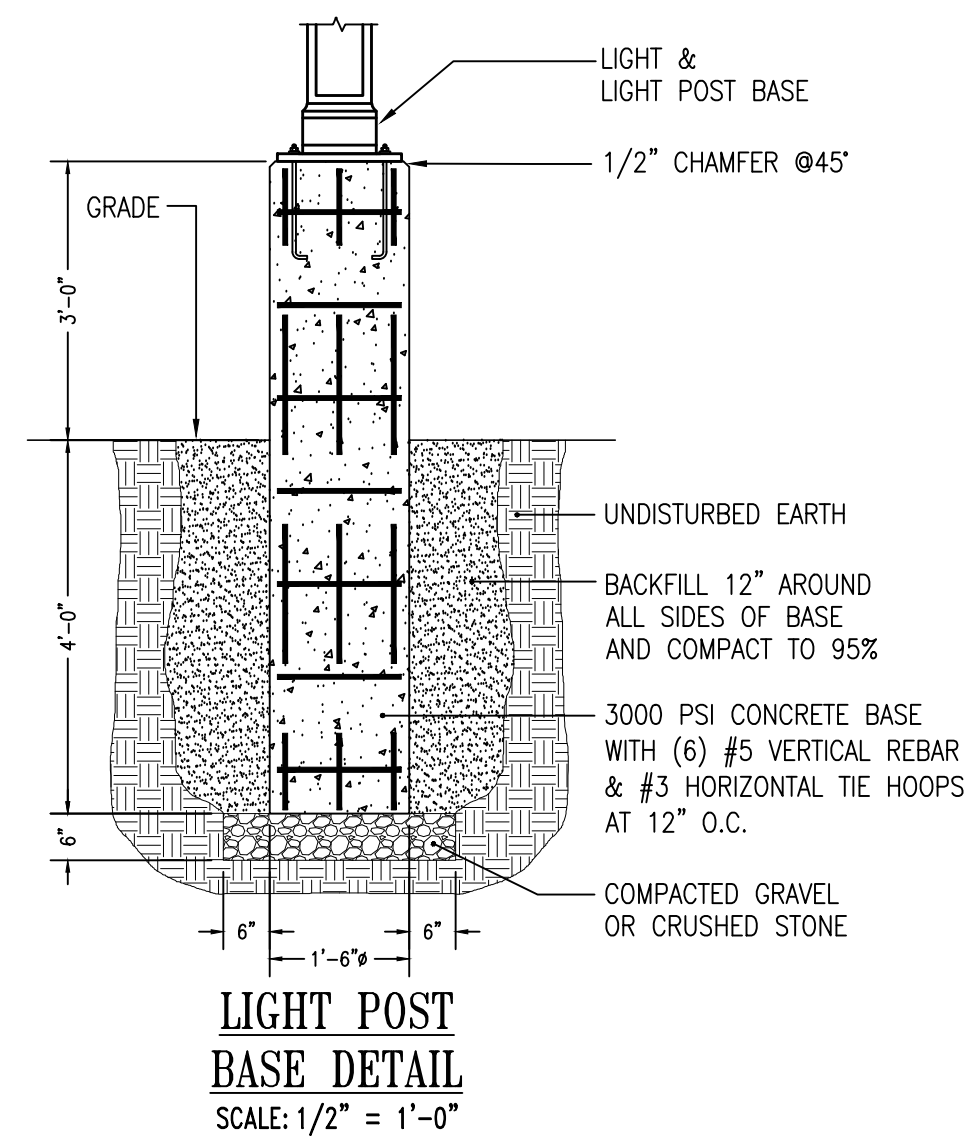
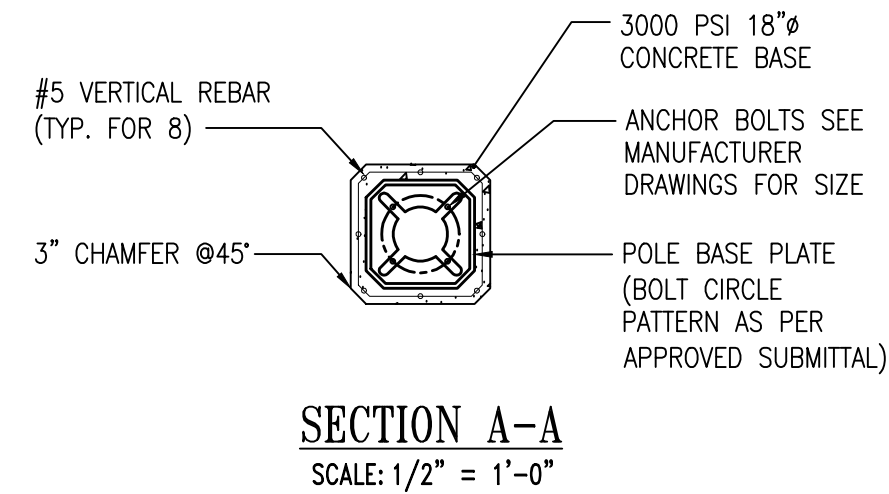
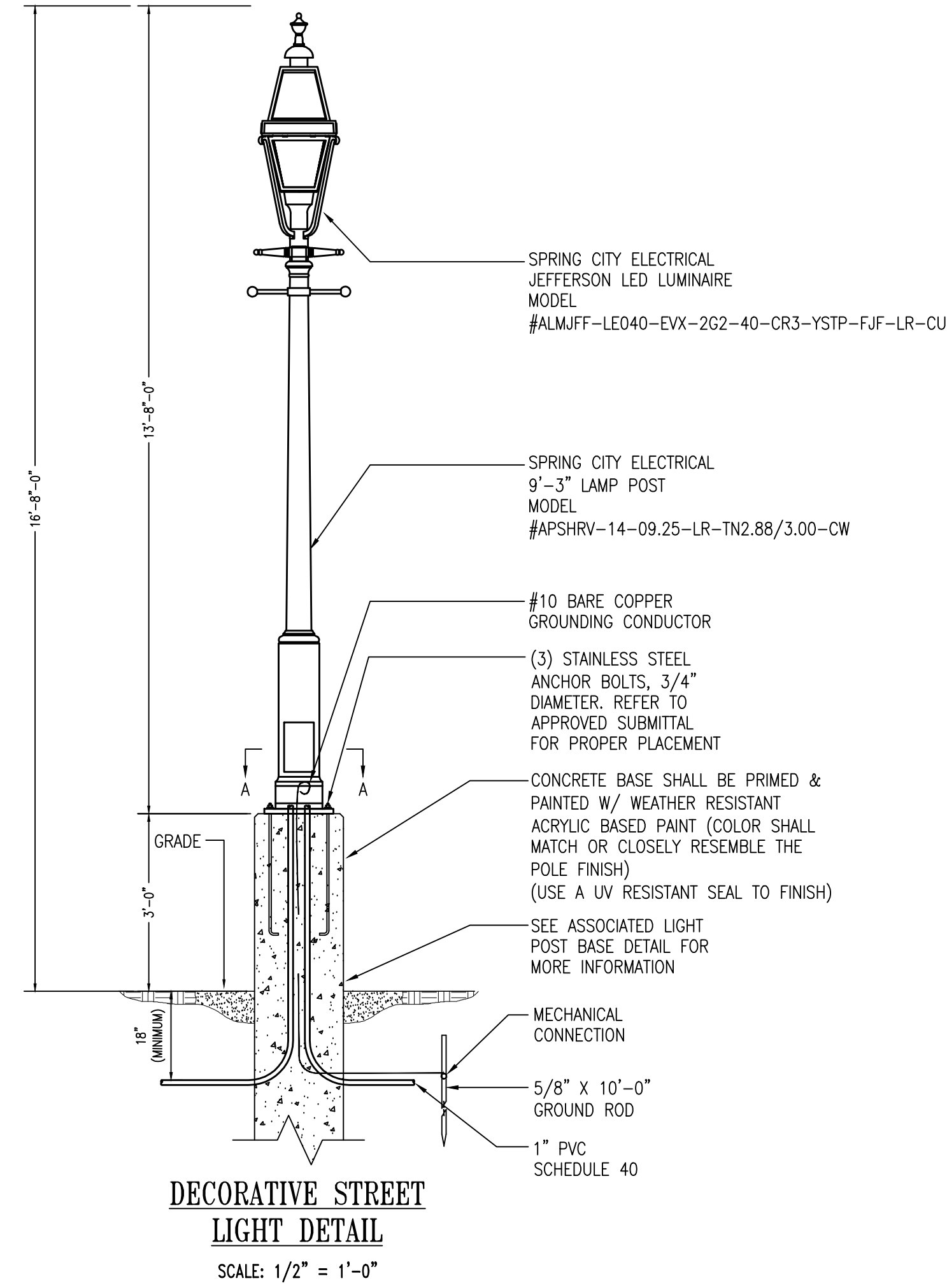
- STREET LIGHTING NOTES**
1. CONTRACTOR SHALL COORDINATE METERED STREET LIGHTING CIRCUITS WITH WIMAPA.
  2. VOLTAGE DROP SHALL BE LIMITED TO 5% FROM ELECTRIC SERVICE TO LAST STREET LIGHT.
  3. UN-METERED STREET LIGHTING CIRCUITS SHALL BE FUSED VIA FUSE BLOCK INSIDE TRANSFORMER SECONDARY ENCLOSURE OR AS DIRECTED BY WIMAPA.
  4. ALL STREET LIGHTS REQUIRE PHOTOCELL CONTROLS. DECORATIVE STREET LIGHTING & ALL STREET LIGHTS WITHOUT AN INTEGRAL PHOTOCELL CONTROL SHALL REQUIRE A PHOTOCELL CONTROL AT THE SERVICE PER THE DETAILS ON THIS DRAWING.
  5. ALTERNATIVES TO THE DECORATIVE STREET LIGHTING SHOWN ON THIS DRAWING SHALL BE APPROVED BY WIMAPA AND ALL PARTIES HAVING JURISDICTION PRIOR TO PURCHASING.
  6. BOLLARD PROTECTION SHALL BE PROVIDED FOR DECORATIVE LIGHT POLES ON A CASE BY CASE BASIS AS DIRECTED BY WIMAPA WHERE STREET LIGHT POLES ARE SUSCEPTIBLE TO VEHICLE COLLISIONS AN CANNOT BE RELOCATED TO AVOID DAMAGE.
  7. MIN. 3 #10 AWG FOR ALL STREET LIGHTING CIRCUITS.
  8. ALL STREET LIGHT POLES TO BE GROUNDED W/ A 5/8" COPPER GROUND ROD AT THE STREET LIGHT BASE.
  9. STRUT STRUCTURES AND SUPPORTS FOR PHOTOCELL CONTROLS AND METERS ARE SHOWN FOR REFERENCE ONLY. ALTERNATIVE SUPPORT METHODS SHALL BE APPROVED BY WIMAPA.
  10. SEE DRAWINGS PREPARED BY BARKLEY TECHNOLOGIES FOR COMPOSITE POLE MOUNTED STREET LIGHTS BASIS OF DESIGN.



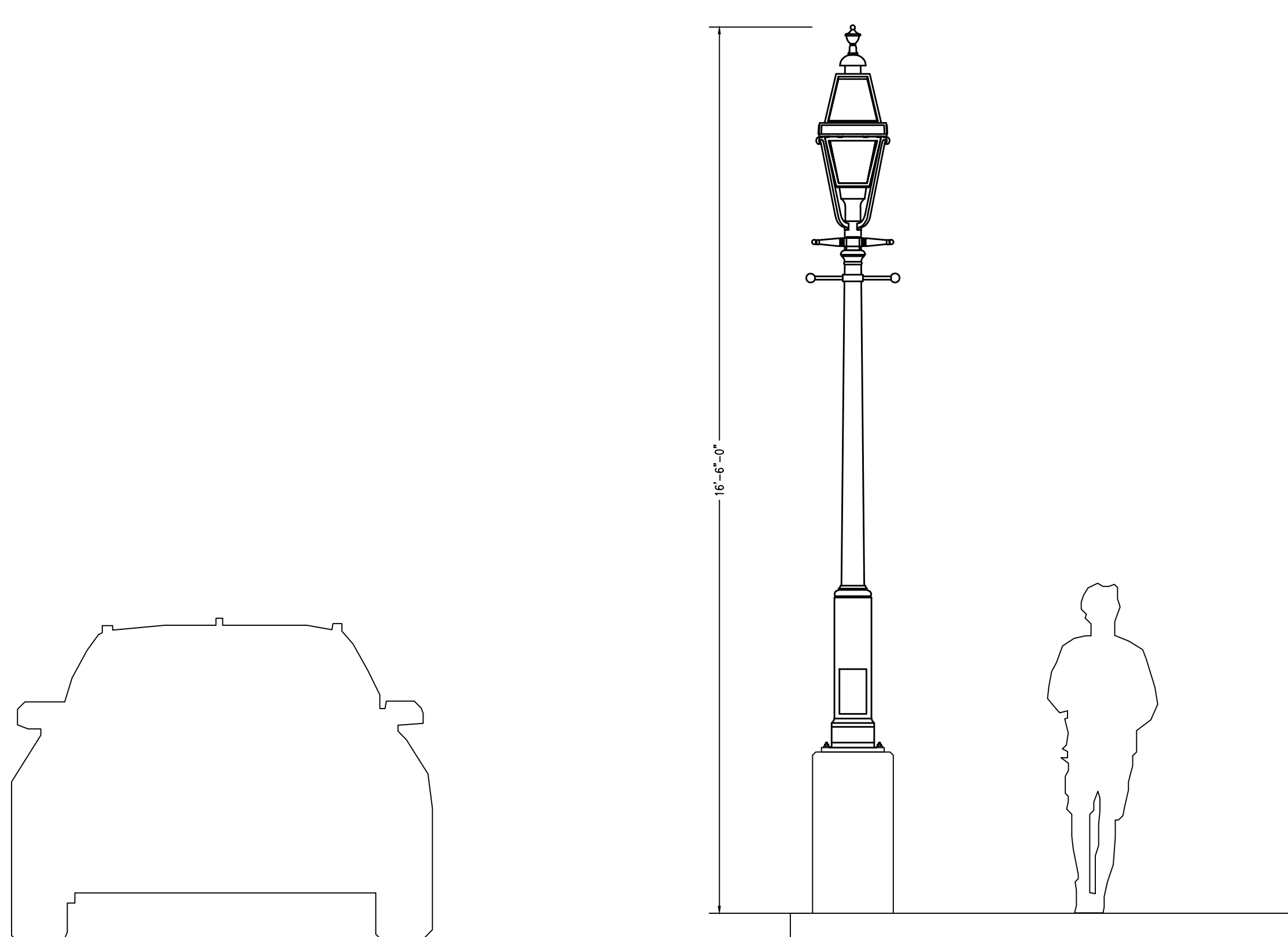
**PHOTOCELL CONTROLLER  
@ PAD MOUNTED TRANSFORMER  
INSTALLATION DETAIL  
SCALE: 1/2" = 1'-0"**



**PHOTOCELL CONTROLLER  
@ PAD MOUNTED TRANSFORMER  
INSTALLATION DETAIL  
(SECTION 'B-B')  
SCALE: 1/2" = 1'-0"**



**REFERENCE IMAGE  
SCALE: NTS**



**STREET LEVEL VIEW  
SCALE: 1/2" = 1'-0"**

#	Date	Description